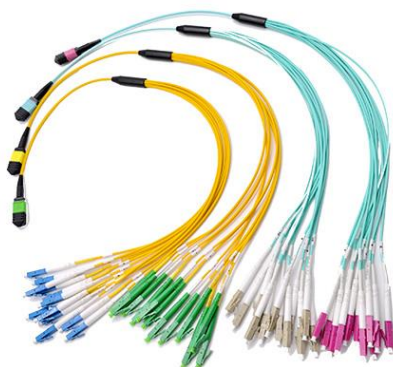


## MPO Patchcord

# You Yuan MPO Fan-out Cable Datasheet

### Description:

With the development of the information age, people have higher and higher requirements for network capacity, and higher and higher requirements for the transmission speed of optical signals. MTP MPO Trunk Multi-Fiber Cable Assemblies facilitate rapid deployment of high-density backbone cabling in data centers and other high-fiber environments, reducing network installation or reconfiguration time and cost. They are used to interconnect cassettes, panels, or ruggedized MTP/MPO fan-outs, spanning MDA, HDA, and EDA zones.



### Application:

- Data Center
- FTTH Networks.
- LAN/WAN/MAN Networks.

### Advantages:

- High quality zirconia ferrules.
- High return loss.
- Low Insertion loss.
- OS2, OM3, OM4, OM5 available
- 0.35dB elite low loss connector
- Allow easy migration from 10GbE to 40GbE or 100GbE
- Pulling eyes are provided as an option to protect the fiber ends during installation
- Good repeatability and interchangeability.
- Flame-retardant, rugged and durable jacket.
- G652D/G657A1/G657A2/G657B3 are available.
- Factory terminated and tested for insertion loss, return loss and end face.

**Technician Parameter:**

Item	You Yuan MPO Fan-out Cable
Connector A	MTP/MPO
Connector B	SC/LC/FC/ST/Others
Polish Type	UPC/APC
MPO End surface Type	Male/Female
Trunk Cable Diameter	3.0mm
Fan-out Cable	0.9/2.0mm
Fiber Count	8-144F
Cable Jacket	PVC/LSZH/OFNP
Fiber Grade	SM:G.657.A1/G.657.A2/G.657.B3;MM:OM1/OM2/OM3/OM4/OM5
Polarity Type	Type A/B/C
Return Loss	Single Mode: UPC Polish: $\geq 50$ , APC Polish: $\geq 60$ Multimode: $\geq 20$
Insertion Loss	Standard Loss $\leq 0.5\text{dB}$ ; Low loss $\leq 0.35\text{dB}$
Wavelength	Single Mode: 1310/1550, Multimode: 850/1300
Minimum Bend Radius	Single Mode: 10.0mm, Multimode: 7.5mm
Operating Temperature	-20~70°C
Storage Temperature	-40~80°C

